



QUEEN OF THE LAKES — Sub-zero Rose used in landscape planting. Adds beauty and color. Potted plants each \$1.75

Boston Ivy Vine

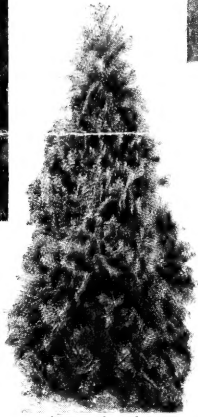
Clings to brick or cement walls. Very desirable wall covering.

2 yr. plants each 75c



EVERGREENS in above picture are as follows:

- Tall one — Welchi juniper — 4-ft. trees ea. \$8.00
- Round ones — Siberian Arborvitae, 18-24 in., ea. \$3.75
- Spreading ones — Juniper, Sabina or Savin
- 18 inch \$2.50 each
- 24 inch \$3.50 each
- 30 inch \$5.00 each

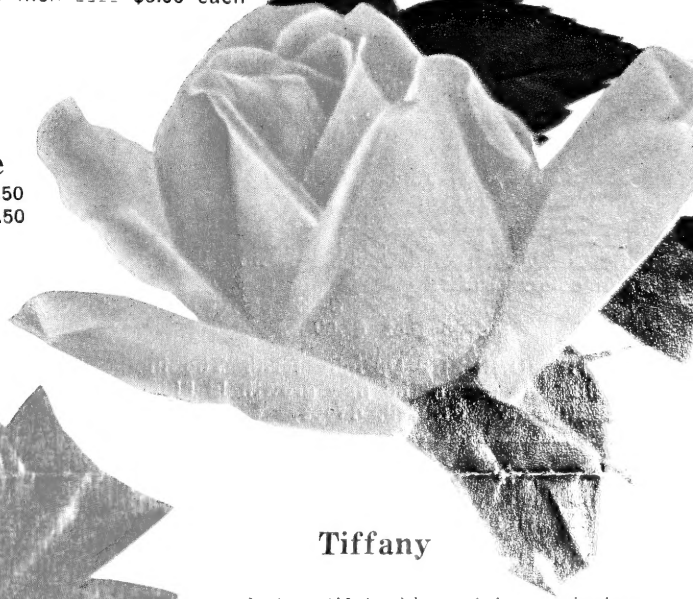


Pyramid Arbor Vitae

18-24 inch B & B each \$3.50
2-3 ft. B & B each \$4.50

Crimson Glory

Still one of the best reds in the Hybrid Teas. Potted plants: each \$1.50



Tiffany

A beautiful phlox pink, producing blooms of outstanding quality. Plant Patent No. 1304 each \$2.50



Pat. No. 1119
BUCCANEER, unfading yellow, ea. \$2.50

BLAZE — Climbing Rose. The best red climber. Potted plants \$1.50 ea.

PATENTED FLORIBUNDA
RED PINOCCHIO: (Pat. 812) Rich red color. Wild rose fragrance. \$1.50 each



U. S. DEPT. OF AGRICULTURE
LIBRARY
WASHINGTON 25, D. C.
OFFICIAL BUSINESS
PRINTED MATTER

PENALTY FOR PRIVATE USE TO AVOID
PAYMENT OF POSTAGE, \$300
(GPO)

BIBLIOGRAPHY DIVISION
LIBRARY, U. S. DEPT. OF AGRICULTURE
WASHINGTON 25, D. C.

LIBRARY
RECEIVED
★ FEB 19 1958 ★
U. S. Department of Agriculture

Peter's Evergreen Nursery
Sherburne, Vermont

CHOICE EVERGREENS

FOR LANDSCAPE PLANTING

COLORADO BLUE SPRUCE: Choice "Shiners" from the finest block of trees we have ever grown. Will be dug, balled and burlapped.
24—30 inch each \$5.50
30—36 inch each \$6.50
36—42 inch each \$7.50

COLORADO GREEN SPRUCE: The same high quality tree in every way except color.
24—30 inch each \$3.50
30—36 inch each \$4.50
36—42 inch each \$5.00

BLACK HILLS SPRUCE: Has proven its value for this area. A very compact growing tree, from little up.

15—18 inch each \$2.25
18—24 inch each \$3.00
24—30 inch each \$3.75
30—36 inch each \$5.00

CONCOLOR FIR: Will make a most beautiful lawn tree. Even, blue color.

15—18 inch trees B & B each \$3.25
A few 5—6 feet at \$10.00 and \$12.50 each

BALSAM FIR: A rapid growing tree. Valuable both as a lawn tree and windbreak.
24—30 inches each \$3.00

DUNDEE JUNIPER: Upright form. Dark green color. Grafted
2—3 foot, \$5.00 3—4 foot, \$6.00
4—5 foot \$7.50

WELCHI JUNIPER: Upright form. The inner foliage is green, the new growth is blue. Very attractive Grafted. 4-foot each \$8.00
5 foot each \$10.00

MUGHO PINE: The dwarf growing pine.
15—18 inch spread each \$3.00
18—24 inch spread each \$4.00

SAVIN JUNIPER: Hardy anywhere. Dark green, soft almost whipcord foliage.
24 inch spread each \$3.50
30 inch spread each \$5.00

HETZI JUNIPER: Same habit of growth as pfitzer. Foliage a light blue.
18—24 inch each \$3.75
24—30 inch each \$4.50

JUNIPER TAMARISCIFOLIA: Resembles Savin but with darker green foliage, with both sharp and whip-cord foliage on the same plant. Very interesting.
24—30 inch each \$4.50

TAXUS OR YEW: Variety intermedia. A comparatively new evergreen in this area. Holds its dark green color all thru the winter. Low growing. Will thrive in complete shade.
15—18 inch each \$4.00
18—24 inch each \$5.50

TAXUS - HALLORAN: A rare variety that appears to be the one upright that can be successfully grown here in the north.
12—15 inch each \$5.00

JUNIPER VIRGINIANA: These red cedars have been sheared twice, into compact uprights. 30—36 inch each \$3.00

Fertilizer

VERTAGREEN ROSE FOOD: A 5-10-5 mixture, 10-lb. bag \$1.40 5-lb. bag 85c
BONE MEAL: 10-lb. bag \$1.00
SHEEP MANURE 25-lb. bag \$1.50
NORTHRUP KING'S HI NITROGEN LAWNFOOD
A 10-6-4 For Turf and Trees
25-lb. Bag \$2.50
50-lb. Bag \$3.95

FLOWERS

TUBEROUS ROOTED BEGONIAS — Four colors to choose from. Red, white, yellow and pink. These bulbs should be started in March or early April.

4 of any one color \$1.00
Mixed colors \$2.50 per dozen

LYTHRUM: Mordens pink. The graceful spikes of deep pink flowers is quite a sight when planted in groups or a hedge. Blooms all summer. A hardy perennial—will grow anywhere.

Heavy 2 year roots 5 for \$1.00

LYTHRUM: Mordens Gleam — A darker color and a spreading habit of growth.

Heavy 2 year roots 5 for \$1.00

ROSES

BROWNELL EVERBLOOMING SUB-ZERO HYBRID TEA ROSES

CURLY PINK: (Pat. 842) Beautiful curled petals borne in clusters. \$1.75 each.

LILY PONS: (Pat. 420) Large white blooms with pure yellow center. \$1.75 each.

QUEEN O' THE LAKES: (Pat. 1003) One of the finest in a red rose. \$1.75 each.

V FOR VICTORY: (Pat. 543) One of the best in a yellow rose. \$1.75 each.

PATENTED HYBRIDS

HELEN TRÄUBEL: (Pat. 1028) Variable color, light pink to apricot. \$2.50 each.

PEACE: (Pat. 591) Golden yellow etched with pink. Large blooms. \$2.50 each

CHRYSLER IMPERIAL: (Pat. 1167) Vivid rich crimson color. One of the best reds \$2.50 each, 3 or more \$2.20 each.

TALLYHO: (Pat. 828) Cardinal-red buds opening to a unique shade of pink on inside of petals. \$2.20 each, 3 or more \$2.00 each.

WHITE KNIGHT: (Pat. applied for) First white rose ever to win A.A.R.S. honor. 1958 award winner. \$3.00 each, 3 or more \$2.65 ea.

MONTEZUMA: (Pat. 1383) A grandiflora rose of salmon - orange color. Has a 9.0 rating. \$2.75 each, 3 or more \$2.40 each.

CRIMSON GLORY: Non-Pat. An old favorite in a dark red. \$1.35 each.

PATENTED FLORIBUNDA

SPARTAN: (Pat. 1357) Red in bud which softens to a reddish coral. A 9.3 rating. \$2.75 each, 3 or more \$2.40 each.

WHITE BOQUET: (Pat. 1415) Lovely white with yellow stamens.

CIRCUS: (Pat. 1382) This new Floribunda is the only ALL American winner for 1955-'56 A gay multi-colored rose. \$2.50 each.

JIMINY CRICKET: (Pat. 1346) Red buds, opening to coral-orange and pink. \$2.25 each.

HARDY RUGOSA ROSES

AMELIA GRAVEREAUX: Bright red, Very fragrant. Blooms till frost. \$1.35 each.

GROOTENDORST SUPREME: Very hardy, red clusters of small roses all summer, \$1.35 each.

HARRISON'S YELLOW: The old standby in a yellow rose. Never fails to bloom. \$1.35 each

CLIMBING ROSES

BLAZE (See front page)

WHITE DAWN: A pure white bloom with a waxy green foliage. \$1.35 each.

FLOWERING SHRUBS

HYDRANGEA A. G.: Blooms early, also known as "Hills of Snow".
2—3 feet each \$1.25

HYDRANGEA P. G.: Blooms late, cone shaped pink blossoms. 2—3 ft. each \$1.25
3—4 ft. tree form each \$2.50

HONEYSUCKLE, CLAVEY'S DWARF: Very compact habit of growth. Will have many uses as a dwarf shrub. 12—18 inch each \$1.00

HI-BUSH CRANBERRY: An attractive tall shrub that puts on two shows each season. White flowers in spring, red berries in the fall. 12—15 inch. each 75c

SPIREA V. H. (Bridal Wreath) an old favorite. Grows anywhere.
2—3 ft. 60c each 3 for \$1.50
18—24 inch. 50c each 3 for \$1.35

RED LEAF BARBERRY: A colorful shrub, red leaves all summer. Red berries hang on all winter.
12—15 inch, 50c 3 for \$1.35

PRUNUS CISTENA: New leaves come out a bright red. Very hardy, dwarf growing.
18—24 inch, Well-branched each \$1.50

TAMARIX: Hispida, a compact tall shrub, bright pink blooms. 2—3 ft. 85c each.

DWARF NINEBARK: A new dwarf strain. Lovely white flowers in June.
18—24 inch 75c each; 3 for \$1.75

HONEYSUCKLE: (Zabeli) Red flowers in May, followed by bright red berries. Deep green foliage.
2—3 ft. Heavy branched, 50c each.

FRENCH LILACS: Chas Joly, a double dark purple; Ludwig Spaeth, A single dark purple; Ellen Wilmont, a double white;
3 year old, 18—24 inch plants \$1.25 each or 3 for \$3.00.

COTONEASTER ACUTIFOLIA: Thick glossy leaves, black berries. Grows anywhere.
2—3 ft. 75c each; 3 for \$1.75

CRIMSON SPIREA: (Anthony Waterer) popular, dwarf shrub. Flowers in flat top clusters all summer. 15—18 inch 75c each

EUONYMUS ALATUS COMPACTA: A new dwarf shrub. Cork-like square bark. Red autumn foliage. 15—18 inch each \$1.50

VARIEGATED DOGWOOD. A beautiful tall shrub where contrast of color is desired, bright red bark.
2—3 ft. plants each \$1.50

FORSYTHIA LYNWOOD GOLD: The first to bloom in the spring. Golden yellow bell-shaped flowers. 2—3 ft. each \$1.00

VIBURNUM: Arrowwood, Ideal for low wet soil. 18—24 inch each \$1.00

VIBURNUM: Lantana or Wayfaring tree. Deep green leaves - single white flowers.
18—24 inch each \$1.00

POLISH PRIVET: This new variety of privet is much hardier than any of the others. Deep green foliage - creamy white blossom.
Heavy 18—24 inch 50c each

NEW DWARF MOCKORANGE: Frosty morn (Pat. 1174) ultimate height 40 inches. Pure white double blossoms.
2—3 ft. each \$2.00
12—15 inch each \$1.10

ASK FOR THE NEW TEXAN ROSE

Windbreak Trees

AND SHRUBS

For Protection Against Snow and Wind Be sure to make the very outside row to the north and west, Honeysuckle.

BELLA ALBIDA HONEYSUCKLE: This is one of the best varieties that should be used for Wind Break planting. Don't be fooled into planting seedlings of some southern grown stock. None will compare with this old standby. One row with plants set 4 ft. apart in the row, is all you need to stop the snow. Heavy field grown, from cuttings, well rooted.

2—3 ft. branched 100 for \$20.00
12—18 inch branched 100 for \$17.50

LAUREL LEAF WILLOW: Heavy 1 year old. Well rooted.

3 to 4 ft., \$9.00 per 100

GOLDEN WILLOW: Heavy 1 year old. Well rooted.

5 to 6 ft. \$10.00 per 100

GREEN ASH: More ash should be planted in the windbreak. Dependable, long lived. Two year old trees. 3 to 4 ft. \$10.00 per 100

SMALL FRUITS

STRAWBERRIES — June Bearing.

Dunlap 100 for \$3.00
Beaver 100 for \$3.00

STRAWBERRIES — Everbearing

New Red Rich 100 for \$15.00

GRAPES: Concord, bears large bunches of sweet, juicy, blue-black grapes every year. Requires winter protection. 3 for \$1.25

GRAPES— Fredonia, ripens 3 weeks earlier than Concord. Requires winter protection.

3 for \$1.25

GRAPES — Moonbeam, a new white grape, Minnesota introduction, that really is a dandy. Sweet as sugar, compact bunches, hardy.

2 year No. 1 plants, 65c each.

RHUBARB — Valentine red, Very tender stalks of extra large size. Tremendous yield.

No. 1 divisions, 65c each.

RHUBARB: McDonald, a good red, juicy variety, not quite as red as valentine.

No. 1 divisions 50c each.

ASPARAGUS — Mary Washington, a very good variety for our soil. Easy to grow.

25 plants for \$1.50 100 for \$5.00

RASPBERRY: New Durham Red. This wonderful new berry provides fresh fruit till frost. Large beautiful red berries. 10 plants for \$2.00

100 for \$15.00

RASPBERRY September: Another new ever-bearing. Fruit is like Latham. Will start bearing in fall at least 2 weeks earlier than any of the others.

10 plants for \$2.50
100 plants for \$20.00

VINES

AMERICAN BITTERSWEET: Plant 2 or more in a group. 2 yr. plants 75c each

HONEYSUCKLE HECKROTTI: Everblooming, May until frost. Flame-red trumpets lined with gold. Heavy, 2 yr. plants, each \$1.00

CLEMATIS: Jackmani, purple; Mme. Edw. Andre, red; Henryi, white. each \$1.50

CLEMATIS PANICULATA: Small white flowers. Blooms in the fall.

2 yr. No. 1 \$1.40 each

PLANT AN ORCHARD

APPLE TREES

3 to 4 ft. \$1.50 each
4 to 5 ft. \$2.00 each

ORIOLE: The earliest high quality, good size apple. Ripens in August.

BEACON: All red, bears young and will ripen in early Sept. Extra good for pies.

MINJON: A dark red fall apple. Truly a Minnesota Jonathan.

PRAIRIE SPY: Late fall apple. One of the best of the recent introductions.

YELLOW TRANSPARENT: The well known early summer apple. Always in demand.

HARALSON: A long keeping winter apple. Large, red, solid, crisp and juicy.

FIRESIDE: A yellow and red apple that has a distinct flavor all its own. Keeps all winter.

WHITNEY CRAB: This well known early crab is still in big demand. Include one or more in your planting.

RED DELICIOUS: Large red summer apple. This tree has produced good crops here for years.

MALINDA: An old time favorite. Good keeper.

GOLDEN DELICIOUS: Grown from a tree right here at home. Like the red delicious, it has produced well for several years.

REDWELL: A new early winter apple from University Farm.

NORTHWESTERN GREENING: A popular old winter apple, with large smooth green fruit.

WEALTHY: One of Minnesota's most popular late fall apples.

MINNESOTA No. 1430: A cross of Golden Delicious and Red Duchess, Ripens early. Recommended for Southern Minnesota.

DUCHESS: Everyone knows this variety. Ripens early. One of the oldest.

RED FLESH CRAB: Fruit is red all thru. A little smaller than Whitney.

CHESTNUT CRAB: A new Minnesota introduction.

DOLGO CRAB: Bears heavy crops of bright red, tart fruit.

PLUM TREES

1 year old from buds. \$1.75 each
MINNESOTA No. 387: A yellow plum of very good flavor.

KAGA: A good red plum. One of the best as a pollinizer.

SUPERIOR: Originated by the Minnesota Fruit Breeding Farm. Very large, delicious red plum. Rich sweet flavor.

PIPESTONE: Extra early, jumbo size. Another fine Minnesota introduction.

MINNESOTA No. 416: A large red plum of high quality for canning.

PEAR TREES

PARKER: One of the sweetest, juiciest pears that grows. Ripens in early September.

GOLDEN SPICE: A flavorful new canning pear that's hardy throughout Minnesota. Plant one of each for best results.

2 trees (one of each) \$4.00

NEW DWARF CHERRY TREES

NORTH STAR: A dwarf pie cherry from U. of Minn. Big mahogany-red cherries on dwarf 5 to 7 foot trees.

1 year old trees, 3 ft. each \$2.00

KROEKER'S CHERRY: Another dwarf cherry that has proven its ability to produce top quality fruit over a period of years. Big red cherries on 5 to 7 ft. trees. Excellent for pies.

1 yr. old trees, 3 ft. and up each \$2.00

SAPALATA: Cherry-Plum Hybrid. Fruit of Sapa type, but sweeter and less clingstone.

3—4 ft. trees \$1.85 each

SHADE AND ORNAMENTAL TREES

FOR BEAUTY AND COMFORT

NEW MORAINÉ LOCUST: (Pat. 836) A perfect shade tree, fast growing and long-lasting. No seed pods, no thorns. It's a beauty.

5—6 foot trees, branched. each \$6.00

CRIMSON KING MAPLE: (Pat. 735) Comes out red in the spring and holds it's color all summer. A brilliant new tree.

6—7 foot whips \$4.75 each

6—7 foot field grown 2 year. \$6.50 each

7—8 foot field grown, 3 yr. \$10.00 each

SCHWEDLERI MAPLE: One of the best. Color changes from red in spring, green in summer to yellow in fall.

6—7 foot field grown, 2 year \$5.00 each

NORWAY MAPLE: Rapid grower, with large green leaves all summer. A very desirable tree.

7—8 foot, field grown, 2 year \$4.50 each

8—10 foot, field grown, 3 year \$10.00 each

HARD OR SUGAR MAPLE: One of our finest shade trees. A native Minnesota tree, green leaves that turn to yellow and scarlet in fall.

6—8 foot trees branched \$4.50 each

WHITE CLUMP BIRCH: For that "natural look," plant three trees in the same hole.

2—3 ft. trees potted 3 for \$2.00

EUROPEAN WHITE BIRCH: Somewhat smaller leaf than the American birch.

6—8 ft. Well branched \$3.00 each

LAKE CITY ELM: A grafted form of American elm, selected for their uniformity, good shape and fast growth.

8—10 ft., Well branched \$3.50 each

AMERICAN ELM: Hardy fast growing, dependable.

10—15 ft. trees \$5.00 each

8—10 ft. trees \$3.50 each

6—8 ft. trees \$2.50 each

GREEN ASH: Dependable, long lived, good shade trees. Hardy everywhere.

6—8 ft. trees, transplanted \$2.25 each

8—10 ft. trees, transplanted \$3.00 each

7—8 ft. trees, budded \$4.00 each

HACKBERRY: Resembles the Elm, somewhat faster growing. A very desirable shade tree. 5—6 ft. trees, well branched \$2.25 each

TOBA HAWTHORNE: (Thornapple) A new budded variety, A beautiful small tree.

3—4 ft. \$2.00 each

HOPA CRAB: A beautiful, upright growing tree. Bright Pink flowers. Fruits red inside and out.

Heavy Branched 5-6 ft. \$2.25 each

MT. ASH, AMERICAN: Well branched trees.

5—6 ft. \$2.75 each

WILLOW, Niobe Weeping: Needs lots of room to develop. Golden yellow bark, narrow green leaves. 6—8 ft. branched \$2.00 each

WILLOW, Pussy: A new French Hybrid. Popular on account of the extra large catkins, in April before the leaves come out.

Well branched, potted each \$1.00

HEDGES

FOR PRIVACY AND DIVISION OF PROPERTY

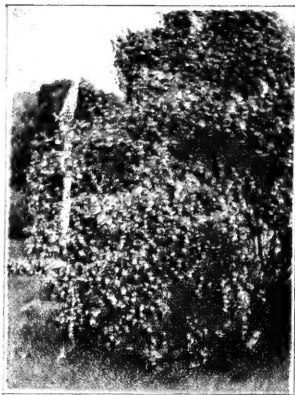
Many good shrubs can be used for hedges. The variety you choose should depend on the kind of hedge you want — sheared formal, or left to grow tall.

Dwarf Ninebark or Clavey's Dwarf Honeysuckle for the low hedge. Cotoneaster, Zabeli Honeysuckle, Improved Red Tart. honeysuckle and Polish Privet for the tall hedge. Even French Lilac or Hi-Bush Cranberry would make a fine hedge. We have all of the above plants in hedge grade. Ask for prices.



Claveys Dwarf Honesuckle

Very Hardy — One of the finest dwarf plants, can also be used as a low hedge.
15-18" bushy plants ----- each 75c



Zabeli Honeysuckle

A beautiful shrub when in bloom— Red flowers, hardy anywhere. Heavy branched, 2-3 ft. ea. 40c

12-18 inch for Hedge \$20 per 100



Almey Flowering Crab

One of the finest of the group 4-5 ft. trees ----- each \$2.50

We Do Not Dig Trees on Sunday!

Previous orders may be called for on Sundays.



Varigated Dogwood

A beautiful tall shrub where contrast of color is desired. 2-3 ft. plants ---- each \$1.50

Minnesota Centennial Specials:

"Once In A Hundred Years"

Black Hills Spruce for Windbreak 12-15 inch ----- each \$1.00

100 Heavy 2-3 ft. White Honeysuckle, Grown from Cuttings — for \$20.00

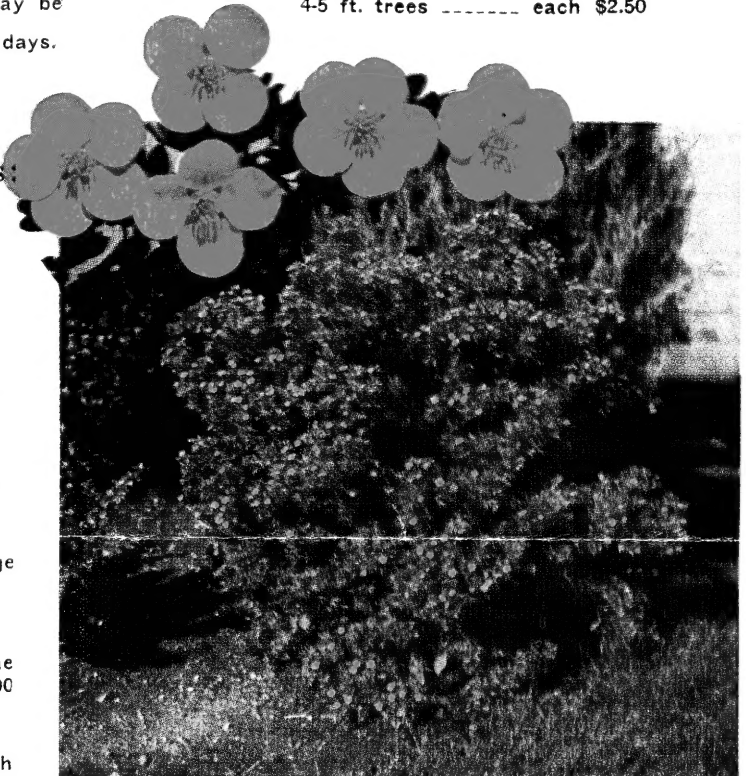
10 Hi-Bush Cranberry 2-3' — for \$6.00

Polish Privet — Makes a beautiful Hedge 9-12 inch ----- 100 for \$12.50

Cotoneaster — Heavy 1-year seedlings, fine for either hedge or shrub — 100 for \$9.00

Four year old Spruce transplants — both Colo Blue and Black Hills — 100 for \$25.00

Morden's Pink Lythrum, Heavy 2-yr. roots 5 for only \$1.00



Potentilla Fruticosa

A dwarf shrub with bright yellow buttercup-like blossoms. Plant in full sun, well-branched. 18 inch plants ----- each \$1.00

Lombardy Poplar

Widely used for tall screens and accent plants. Glossy leaves that shimmer in the breeze.

4-5 ft. — 1 year old ----- each 50c
3-4 ft. — 1 year old ----- 10 for \$3.50

Bolleana Poplar

Well-branched 2 yr. — 6-7 ft. -- ea. \$1.60

Dwarf Ninebark Hedge

This new plant makes an ideal formal hedge. Very dense, easily sheared, upright compact growth. Plant 18-24 inches apart in row.

Heavy 2-yr. old plants ---- 25 for \$7.50
Extra heavy for individual shrub planting each — 75c

